



Schools. Parks. Neighborhoods.

WHAT IS PROPOSED?

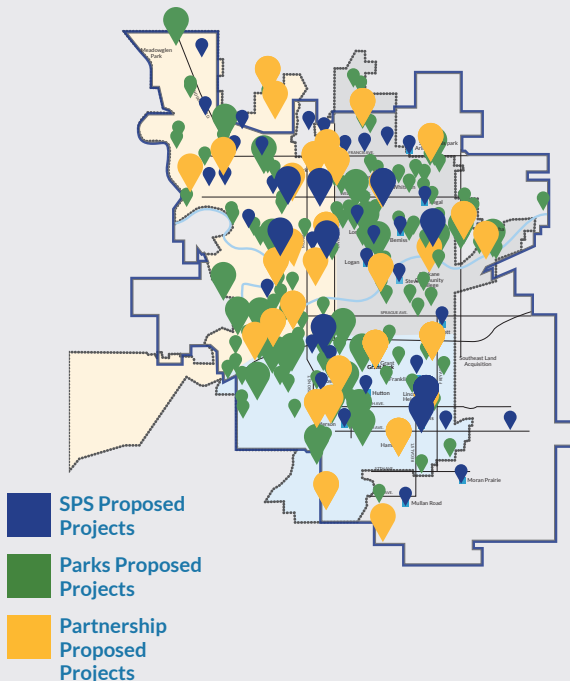
Spokane Public Schools (SPS) and Spokane Parks and Recreation (Parks) have joined a range of community partners to present this shared vision for the future of our city's parks, schools, and neighborhoods.

Spokane is experiencing historic participation in youth activities, adult recreation, and community programs. At the same time, many school buildings and park facilities are aging and need upgrades to function well and sustain increasing demand.

Working together, we're proposing a plan to improve parks and schools in every neighborhood to address the top needs we've heard from the community.

Together Spokane proposes two separate ballot measures – a parks levy and a school bond – that align to accomplish more than 200 projects across our community.

If both measures pass, we will complete 30+ additional projects that neither entity could have accomplished alone.



WHAT WILL IT COST?

The proposed Parks ballot measure is a \$240 million 20-year levy, while the proposed SPS bond measure is a \$200 million construction plan that would be paid off over 20 years.

The cost of both initiatives combined is 29 cents per \$1,000 of assessed property value in the first year with an average increase of between 2%-3% per year calculated through 2030.

Homeowners can calculate the monthly increase to their tax bill at TogetherSpokane.org/Cost.

Spokane Parks and Spokane Public Schools have developed individual Q&A specific to the separate proposed ballot measures:

- spokaneschools.org/2025bond
- spokaneparks.org/levy

HOW CAN WE DO MORE TOGETHER?

If Parks and SPS were to do government as usual – in our silos with non-aligned ballot measures – we could achieve around 170 projects citywide for a taxpayer cost of 31 cents per \$1,000 of assessed home value.

Together, we can accomplish more than 30 additional projects with fewer tax dollars – a local property tax rate of 29 cents per \$1,000 of assessed home value in the first year.

This is made possible by:

- Coordinating facilities and programming for more access
- Joint funding and land use for efficient development
- Attracting more project partners to contribute private funds

As of July 2025, private partners have committed about \$11 million to infrastructure and/or programming for one or more projects. Find a list at TogetherSpokane.org/Partnerships.

WHAT'S THE TIMELINE?

Spokane voters will consider separate but aligned ballot measures as part of a November 4, 2025 ballot.

If both initiatives pass, major joint projects and schools projects would break ground within the first 5 years, while Parks projects would be completed over 20 years.

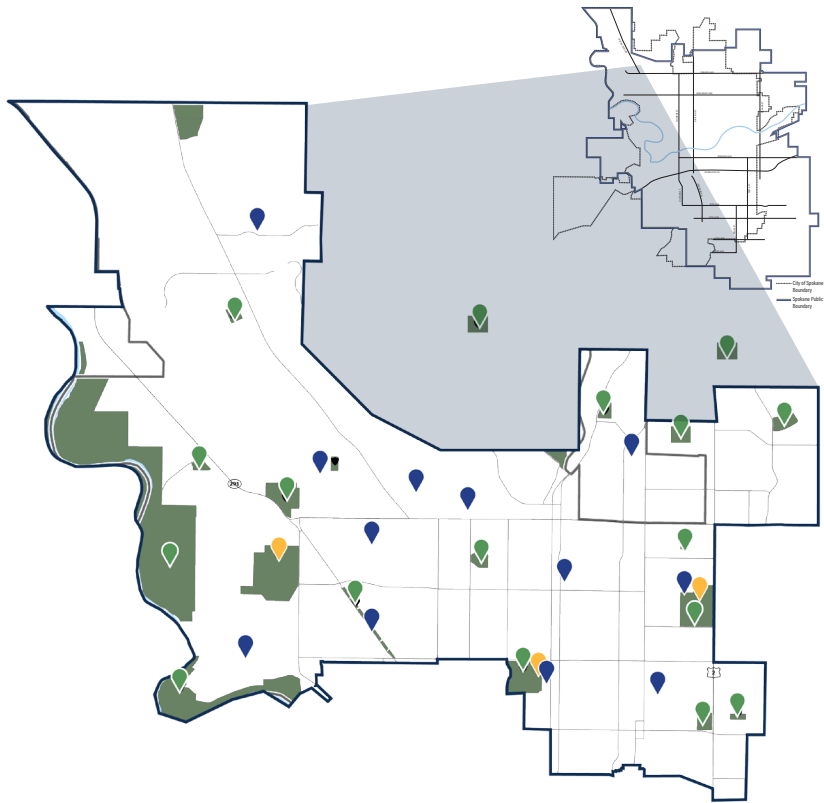
Learn more at TogetherSpokane.org

Information current as of July, 2025





Northwest Projects



Map detail shows general project placement within Northwest school district boundary. For a complete interactive map visit TogetherSpokane.org

Madison School & Rec Center



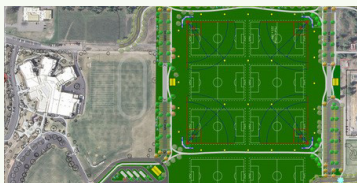
Co-locate a new Madison Elementary School with a Boys & Girls Club and multi-use recreational facility next to Franklin Park.

New Meadowglen Park



Develop a new park in North Indian Trail, a neighborhood without a 10-minute walk to a park.

Merkel Sports Complex Expansion



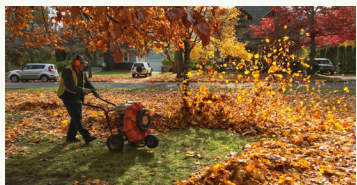
Develop at least six new fields at the site of former Joe Albi Stadium to double capacity and support increased student and community access.

Citywide All-Weather Fields with Lights



At least one all-weather rectangular field and at least one turf infield with lighting installed at Shadle Park.

Improved Parks Security & Maintenance



Improved routine cleaning and care of all 90+ parks through more maintenance staff, and additional Special Commission Park Rangers to serve all neighborhoods.

Facility Improvements for NW Schools



Provide necessary facility improvements to ensure each northwest school is safe, secure, and has a long useful lifespan.

Shadle Park Indoor Tennis Center



Partner with the United States Tennis Association PNW to construct an indoor tennis facility for Shadle Park High School students and community members.

Other Projects in the Northwest Region

- Repair Or Replace All Park Restrooms And Playgrounds
- Collaborative Facility Scheduling
- Improved Early Learning Access
- Outdoor Learning Centers
- Trail & Trailhead Improvements

Learn About All 200+ Projects Citywide at TogetherSpokane.org

